

SAFETY KNIFE CUTX MIDI X8080 AUTOMATIC ONE



Very high level of safety and functionality


The CUTX MIDI X8080 can be operated from above or from the side. A special feature is the upper slider, which allows more pressure to be exerted, especially for vertical cuts.

The fully automatic blade retraction ensures that the blade slides back into the housing as soon as the cutting process is complete, even when the slider is pushed forwards.

The ergonomic design ensures fatigue-free working and facilitates intensive use during cutting.

Low costs thanks to replaceable blades that can be used on both sides. Various blade types available!

Dimensions & Details

Variations:	Art. 3010140, grey-black Art. 3010115, white-black other colours on request
Packing unit:	Individual packaging
Dimensions (L x B x H):	150 x 38 x 20 mm
Product weight:	67 g
Cutting depth:	22 mm
Base material:	plastic
Security level:	2 
	Fully automatic blade retraction
EAN-Code Art. 3010140:	4251946400409
EAN-Code Art. 3010115:	4251946400270
Customs tariff number:	82119300

Fully automatic blade retraction / Ceramic safety blades

The fully automatic blade retraction on safety knives offers you a high level of protection against injury. It works even if the user is still holding the slider. The blade is always retracted fully automatically into the handle after the cutting process as soon as it leaves the material to be cut.

Economical

The blade of the CUTX MIDI 8080 can be reversed or replaced. The cutter itself can accompany you for a long time.

As the blade can be used on both sides, the CUTX MIDI 8080 is an extremely durable safety knife with low costs. There are different blade types depending on your preferences and requirements.

Sustainable

We want to do our bit: CUTX safety knives are made in Solingen / Germany from up to 80% recyclable plastic. We use sustainable energy for production and assembly, including from our own solar power system.

Our extensive experience in knife production also guarantees consistently high quality and durability.

You can also do your bit: we take back old cutting tools and recycle them properly. Please contact us: mail@cutx.info

Printing and special colours possible

Our items are also available in your favorite colours. In addition, they can be printed, so that you have here an excellent and individual advertising medium, which your customers will certainly take at hand again and again.

Extremely simple and safe

Slide out the blade, attach it, cut. The fully automatic blade retraction ensures that the blade automatically slides back into the housing as soon as the cut material is removed. Even if you continue to hold the slider!



foil



cardboard



strapping tape



adhesive tape



paper

Area of application

Cutting of:
Foil, cardboard, strapping tape, adhesive tape, paper.
Knife is suitable for right and left-handed users.

Technical information

Safety knife CUTX MIDI X8080

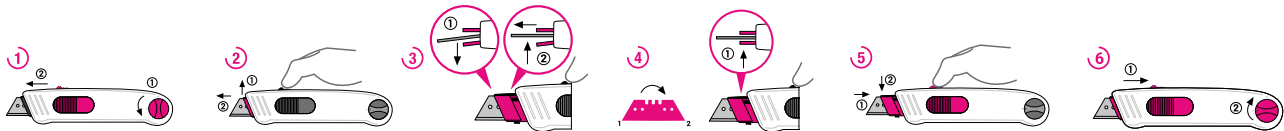


Changing blades

Take care when changing blades. Risk of injury!

To change the blade, turn the screw at the end of the handle to the left, push the blade forwards on the upper slider, carefully grasp the blade between your thumb and index finger and pull it slightly towards the upper narrow side of the housing. This releases the blade holder and you can pull it forwards out of the housing. Carefully grasp the blade between your thumb and index finger, lift it upwards and pull it out to the front to turn it over or replace it.

Insert the blade by pushing it into the blade holder as far as it will go, press the top cover firmly and push the blade holder back into the slider. Press the holder down briefly to lock it in place. You can then push the slider back into the housing and turn the screw at the end of the handle to the upper point. Done.



1 Open the locking screw by turning it anti-clockwise. Push the blade forward on the upper slider and hold the slider in place until the end of the blade change.

2 First pull the blade upwards, then forwards to release the blade holder.

3 To open the cover, lift the blade, then lower it and pull it forwards out of the holder.

4 Turn or replace the blade. Blade type: H10002 or comparable blades with the same dimensions. Slide the blade into the blade holder and close the cover.

5 Push the blade holder back first, then press it down to lock it in place.

6 Push the upper slider backwards, close the locking screw by turning it to the right.

Spare parts / blades

The spare blades are supplied in dispensers of 10 each.

H10002, trapezoidal blade (can be used on 2 sides, replaceable)

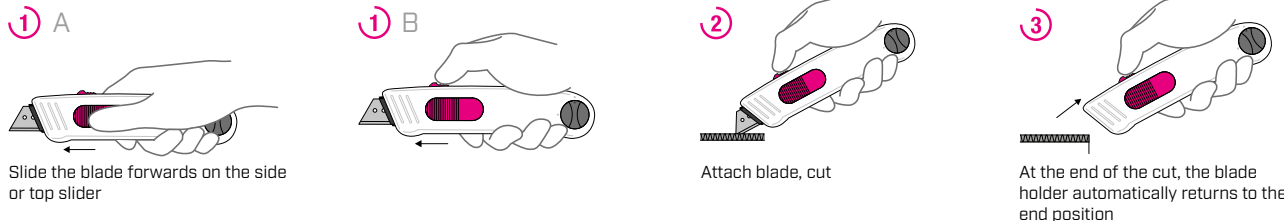
H10005, rounded trapezoid blade (can be used on 2 sides, replaceable)



see also safety instructions

Safe handling

Slide out the blade, attach and cut. The automatic blade retraction ensures that the blade slides back into the housing automatically as soon as the cut material is removed.



1 A Slide the blade forwards on the side or top slider

2 Attach blade, cut

3 At the end of the cut, the blade holder automatically returns to the end position

Safety instructions

Please read the instructions carefully and keep them to ensure prolonged and safe use of our cutting tools.

This product is only approved for manual cutting and must not be used for purposes other than those for which it is intended. Care must be taken to ensure correct handling and use.

Avoid injury: Only use cutting tools that are in good condition and have sharp, undamaged blades. Exercise caution when handling this product. Be sure to familiarise yourself with its handling and operation beforehand. The sharp blade can cause serious cuts. Do not hold the blade, do not place your other hand along the cutting path of the cutter and always cut past your body. Replace blunt blades quickly and dispose of them properly.

Tighten the cutter to avoid injury. Store the cutter in a safe place.

Keep the cutter clean and do not expose it unnecessarily to dust, dirt and moisture to ensure longevity.

No liability is accepted for consequential damage.

Subject to technical changes and errors!

This product should not be used by children!